

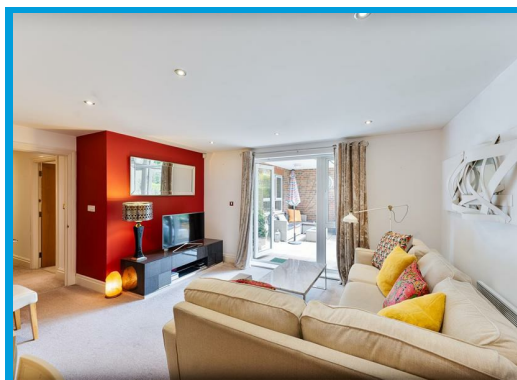
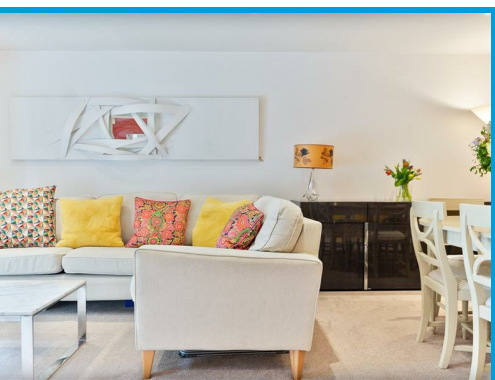


Seven Kings Way, Kingston Upon Thames, KT2 5BY

£550,000

Cavender Estate Agents are pleased to offer this stunning two-bedroom ground floor flat in the heart of Kingston. The property offers a wide range of internal benefits, including two double bedrooms, a large living area, two bathrooms & an impressive private garden. The complex has underground parking, a 24-hour concierge, a gym and extensive grounds with lovely pockets of private space. You need to come and see the property to truly appreciate what is on offer.

Kingston is a bustling town with excellent links to London, Surrey, and major airports. With a stunning riverside, lots of shops and a choice of dozens of restaurants, it truly is a city with something to suit all tastes and needs.





Energy Efficiency Rating		Current	Potential	Environmental Impact (CO <sub>2</sub> ) Rating		Current	Potential
Very energy efficient - lower running costs	(92 plus) <b>A</b>			Very environmentally friendly - lower CO <sub>2</sub> emissions	(92 plus) <b>A</b>		
(81-91) <b>B</b>				(81-91) <b>B</b>			
(69-80) <b>C</b>				(69-80) <b>C</b>			
(55-68) <b>D</b>				(55-68) <b>D</b>			
(39-54) <b>E</b>				(39-54) <b>E</b>			
(21-38) <b>F</b>				(21-38) <b>F</b>			
1-20 <b>G</b>				(1-20) <b>G</b>			
Not energy efficient - higher running costs				Not environmentally friendly - higher CO <sub>2</sub> emissions			
<b>England &amp; Wales</b>		EU Directive 2002/91/EC		<b>England &amp; Wales</b>		EU Directive 2002/91/EC	

